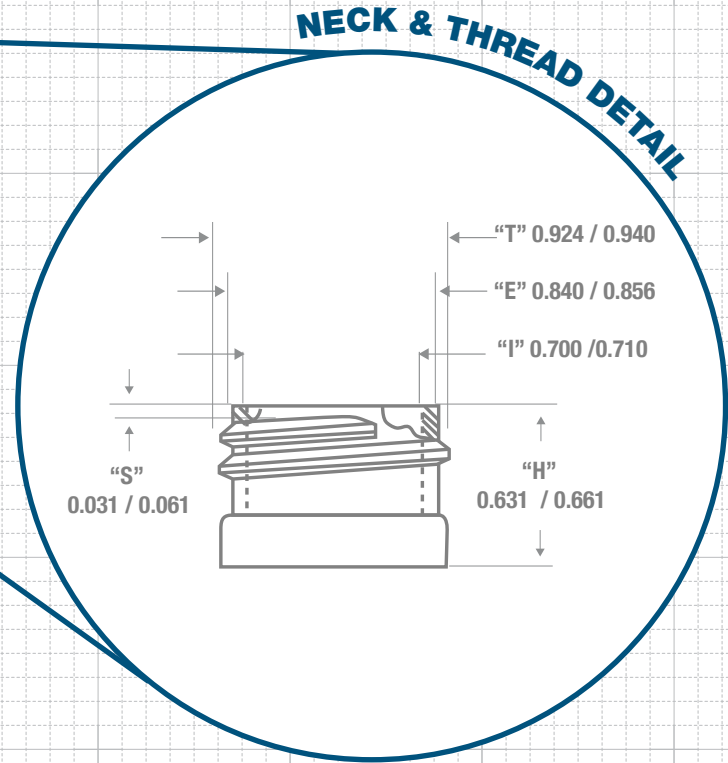
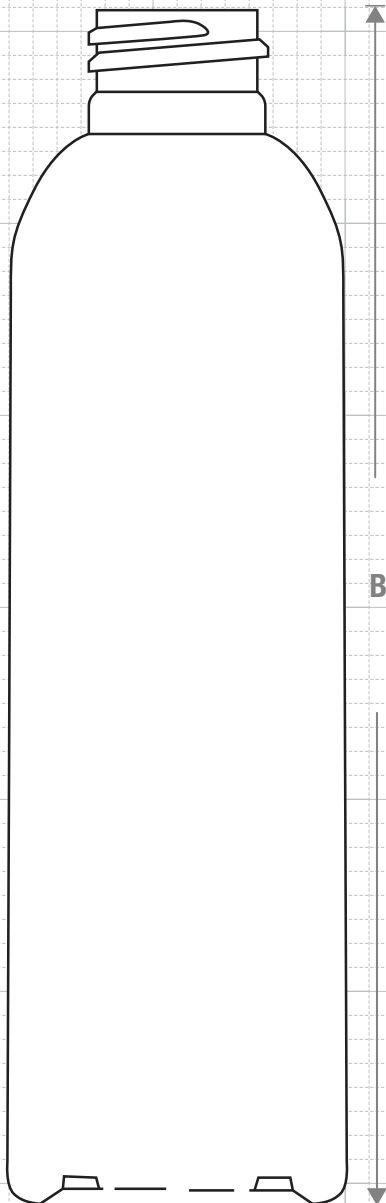




### FRONT VIEW



- HDPE
- LDPE
- PP
- OTHER

Drawing:  
**6 oz Imperial Round**  
**24/410**

Stock Code:  
**000600050240000**

Manufacturing Process:  
**Extrusion Blow Molding**

Overflow Capacity:  
**198.0-210 ml (6.7 - 7.1 oz)**

Gram Weight:  
**17.0 ± 2**

Neck Finish:  
**24/410**

Base Width (A):  
**1.770 ± 0.050**

Overall Height (B):  
**6.220± 0.050**

Max Print Area (Height):  
**4500**

Max Print Area (Width):  
**5.312"**

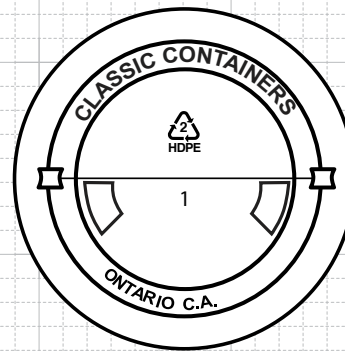
Case Pack: **546**

Case Weight (lb): **23.4± 2.4**

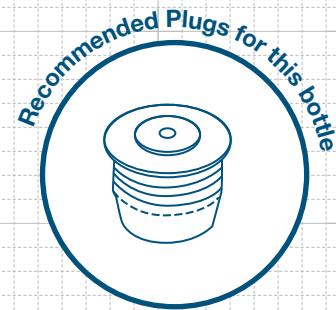
Cases Per Pallet: **16**

Box Dimensions:  
**24 7/16 x18 1/2 x23**

Stock Material:



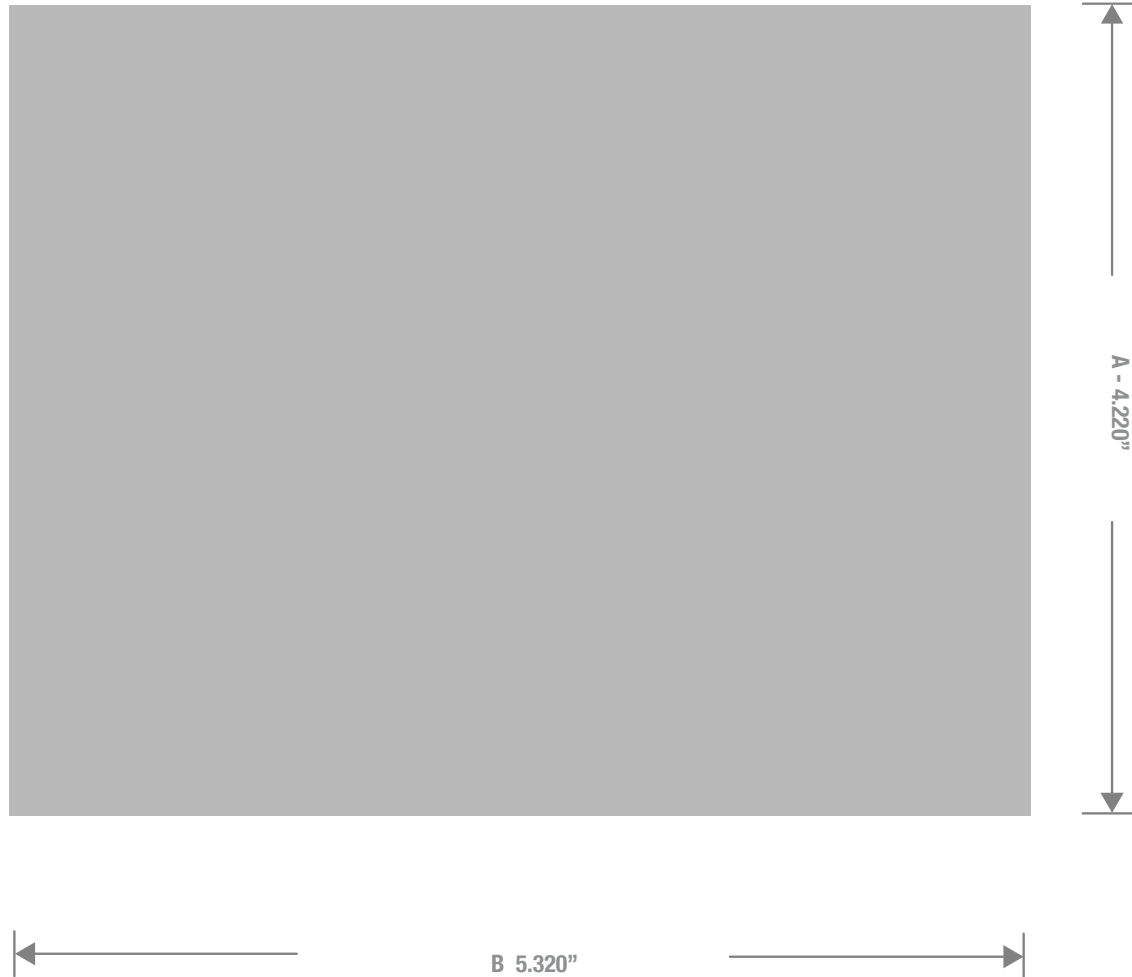
### BOTTOM VIEW



### FRICTION FIT

**CLASSIC CONTAINERS INC**  
 1700 S. Hellman Ave.  
 Ontario, CA 91761  
 Phone: 909-930-3610  
 e-mail: info@classiccontainers.com  
[www.classiccontainers.com](http://www.classiccontainers.com)

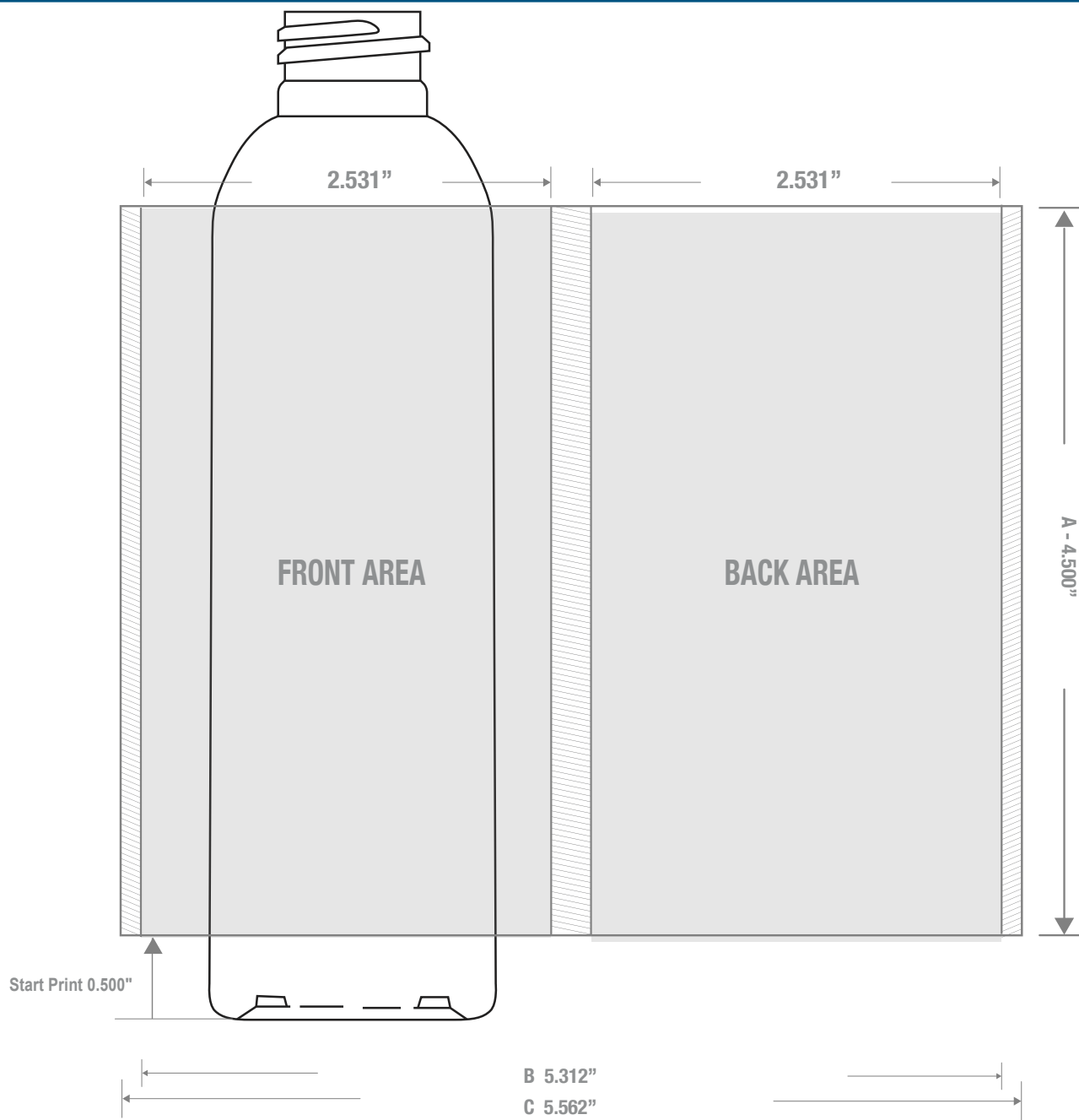
LABELING AREA



1700 S Hellman Ave, Ontario, California 91761  
Phone: (909) 930-3610 | Fax: (909) 930-3640  
e-mail: [info@classiccontainers.com](mailto:info@classiccontainers.com)  
[www.classiccontainers.com](http://www.classiccontainers.com)

**A - Total Height.**  
**B - Total Width**

PRINTING SPECIFICATIONS: 6 oz IMPERIAL ROUND 24/410



1700 S Hellman Ave, Ontario, California 91761  
 Phone: (909) 930-3610 | Fax: (909) 930-3640  
 e-mail: [info@classiccontainers.com](mailto:info@classiccontainers.com)  
[www.classiccontainers.com](http://www.classiccontainers.com)

**A - Total Height.**  
**B - Max. Decorating Area.**  
**C - Total bottle circumference.**  
 - Unprintable area.