



Drawing:  
**4 oz Cylinder Round 24/410  
M-2**

Stock Code:  
**0004000102400M2**

Manufacturing Process:  
**Extrusion Blow Molding**

Overflow Capacity:  
**127 - 139 ml (4.3 - 4.7 oz)**

Gram Weight:  
**14 ± 1**

Neck Finish:  
**24/410**

Base Width (A):  
**1.625 ± 0.050**

Overall Height (B):  
**4.828 ± 0.050**

Max Print Area (Height):  
**3.562"**

Max Print Area (Width):  
**4.860"**

Case Pack: **489**

Case Weight (lb): **17.2 ± 1.1**

Cases Per Pallet: **25**

Box Dimensions:  
**23 5/8 x 15 9/16 x 17**

Stock Material:



**CLASSIC CONTAINERS INC**  
1700 S. Hellman Ave.  
Ontario, CA 91761  
Phone: 909-930-3610  
e-mail: info@classiccontainers.com  
[www.classiccontainers.com](http://www.classiccontainers.com)

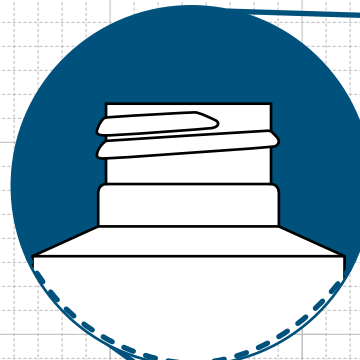
### FRONT VIEW



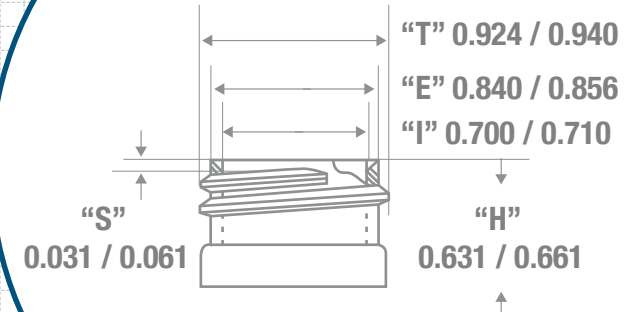
4 oz Cylinder Round  
With Dome Cap

B

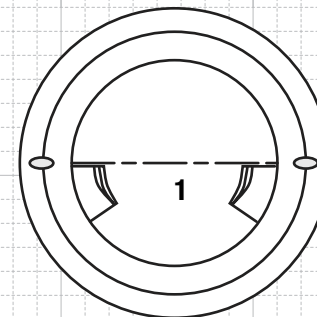
A



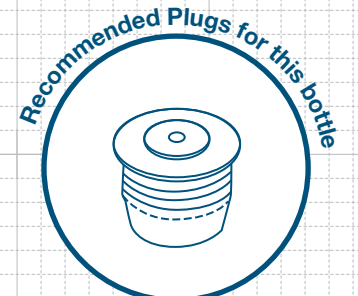
### NECK & THREAD DETAIL



5.220"

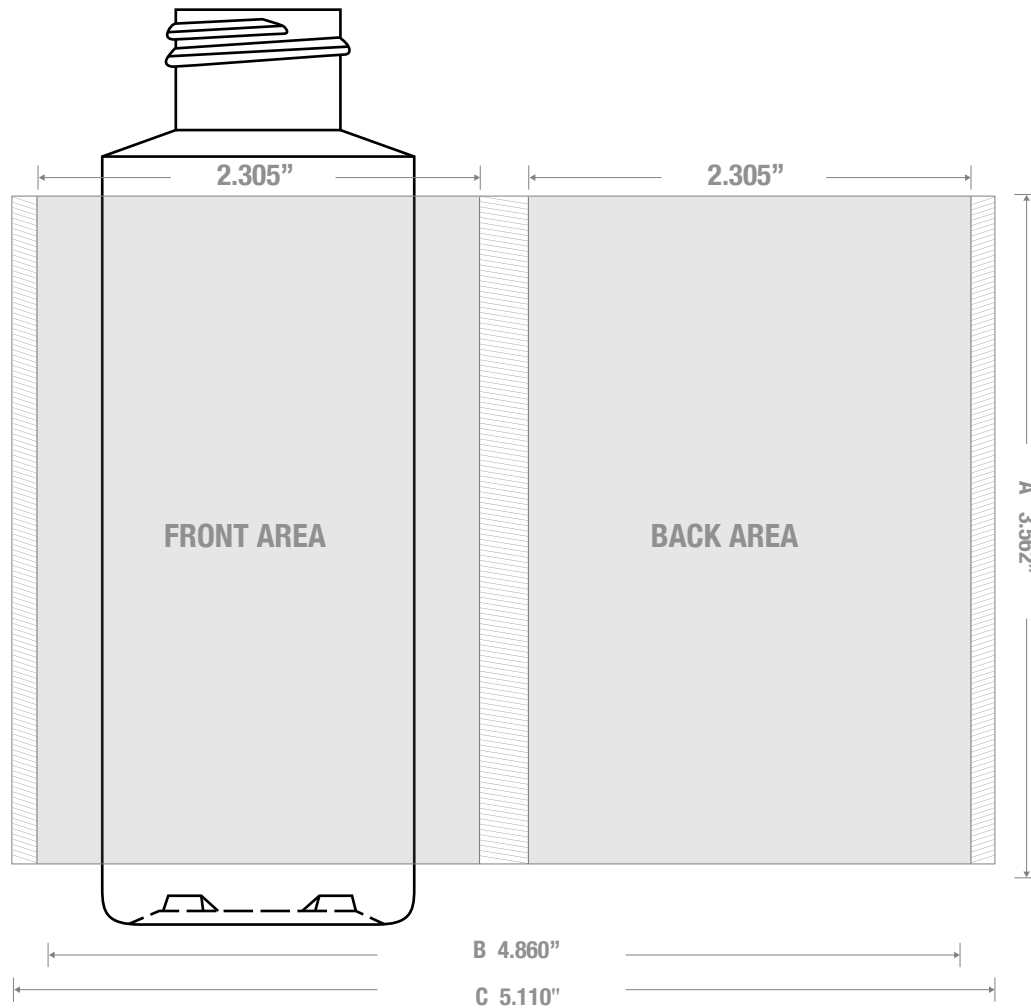


### BOTTOM VIEW



### FRICION FIT

# PRINTING SPECIFICATIONS: 4 oz CYLINDER ROUND 24/410 M-2



1700 S Hellman Ave, Ontario, California 91761  
Phone: (909) 930-3610 | Fax: (909) 930-3640  
e-mail: [info@classiccontainers.com](mailto:info@classiccontainers.com)  
[www.classiccontainers.com](http://www.classiccontainers.com)

**A - Total Height.**  
**B - Max. Decorating Area.**  
**C - Total bottle circumference.**  
▨ - Unprintable area.

# LABELING SPECIFICATIONS: 4 oz CYLINDER ROUND 24/410M-2



1700 S Hellman Ave, Ontario, California 91761  
Phone: (909) 930-3610 | Fax: (909) 930-3640  
e-mail: [info@classiccontainers.com](mailto:info@classiccontainers.com)  
[www.classiccontainers.com](http://www.classiccontainers.com)

**A - Total Height.**  
**B - Total bottle circumference.**