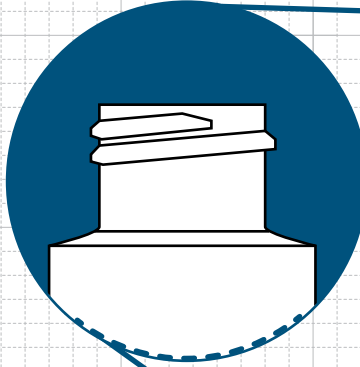
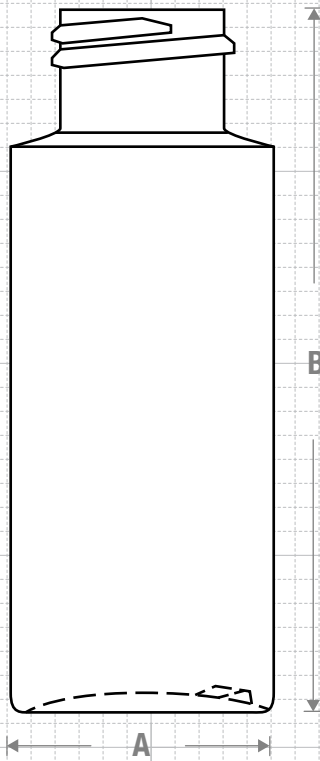
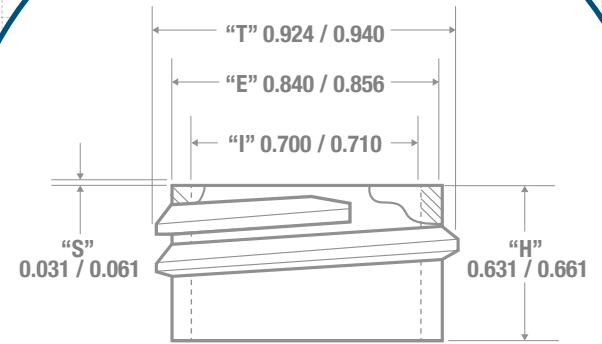




# FRONT VIEW



# NECK & THREAD DETAIL



Drawing:  
2 oz Cylinder Round 24/410  
M-2

Stock Code:  
0002000102400M2

Manufacturing Process:  
Extrusion Blow Molding

Overflow Capacity:  
65 - 74 ml (2.2 - 2.5 oz)

Gram Weight:  
10.0 ± 1

Neck Finish:  
24/410

Base Width (A):  
1.370 ± 0.050

Overall Height (B):  
3.660 ± 0.050

Max Print Area (Height):  
2.500"

Max Print Area (Width):  
4.063"

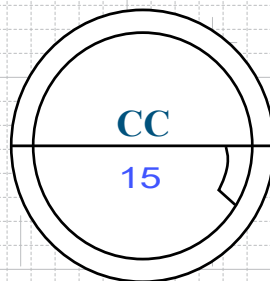
Case Pack: 928

Case Weight (lb): 22.6 ± 2.0

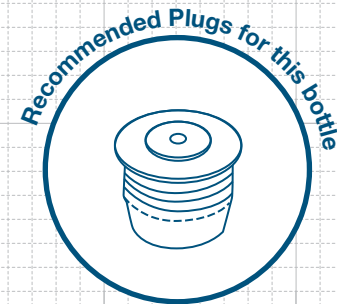
Cases Per Pallet: 25

Box Dimensions:  
23 5/8 x 15 9/16 x 17

Stock Material:



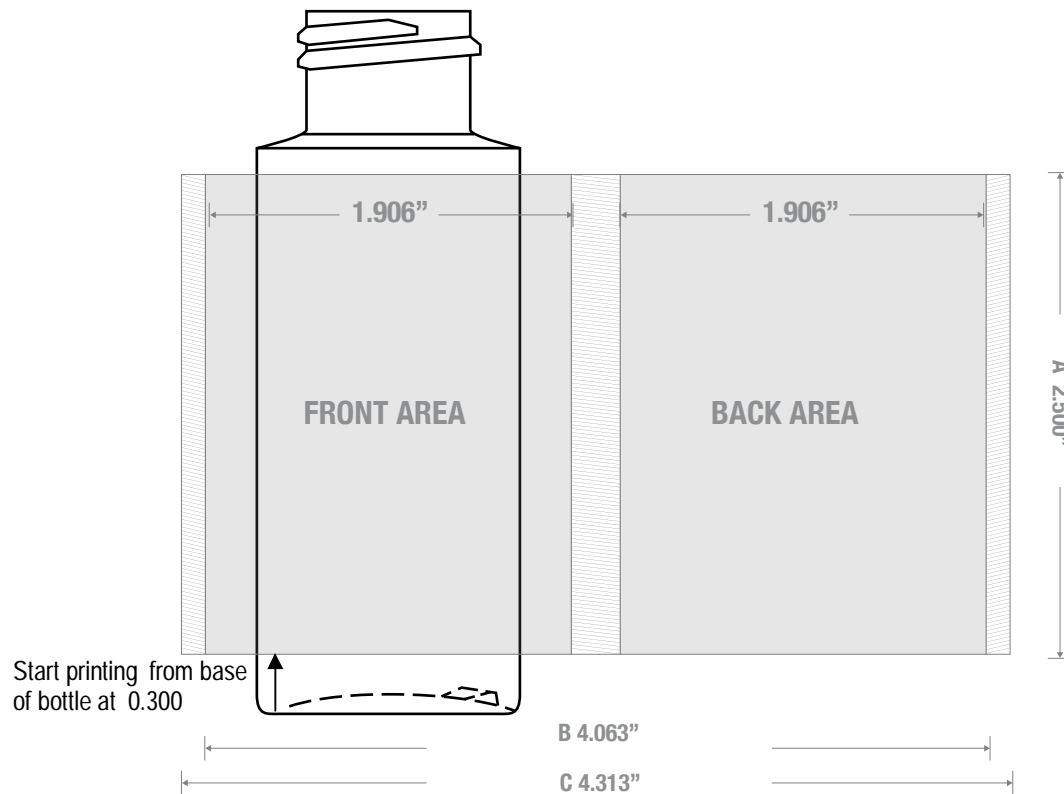
# BOTTOM VIEW



# FRICTION FIT

**CLASSIC CONTAINERS INC**  
1700 S. Hellman Ave.  
Ontario, CA 91761  
Phone: 909-930-3610  
e-mail: info@classiccontainers.com  
www.classiccontainers.com

# PRINTING SPECIFICATIONS: 2 oz CYLINDER ROUND 24/410 M-2



1700 S Hellman Ave, Ontario, California 91761  
Phone: (909) 930-3610 | Fax: (909) 930-3640  
e-mail: [info@classiccontainers.com](mailto:info@classiccontainers.com)  
[www.classiccontainers.com](http://www.classiccontainers.com)

A - Total Height.  
B - Max. Decorating Area.  
C - Total bottle circumference.  
☒ - Unprintable area.

# LABELING SPECIFICATIONS: 2 oz CYLINDER ROUND24/410 M-2



1700 S Hellman Ave, Ontario, California 91761  
Phone: (909) 930-3610 | Fax: (909) 930-3640  
e-mail: [info@classiccontainers.com](mailto:info@classiccontainers.com)  
[www.classiccontainers.com](http://www.classiccontainers.com)

**A - Total Height.**  
**B - Total bottle circumference.**