



Drawing:  
**2 oz Cylinder Round 24/400**  
**M- 2**

Stock Code:  
**0002000102600M2**

Manufacturing Process:  
**Extrusion Blow Molding**

Overflow Capacity:  
**64.9 - 73.7 ml (2.2 - 2.5 oz)**

Gram Weight:  
**10 ± 1**

Neck Finish:  
**24/400**

Base Width (A):  
**1.370 ± 0.050**

Overall Height (B):  
**3.530 ± 0.050**

Max Print Area (Height):  
**2.500"**

Max Print Area (Width):  
**4.063"**

Case Pack: **1004**

Case Weight (lb): **24.2 ± 2.2**

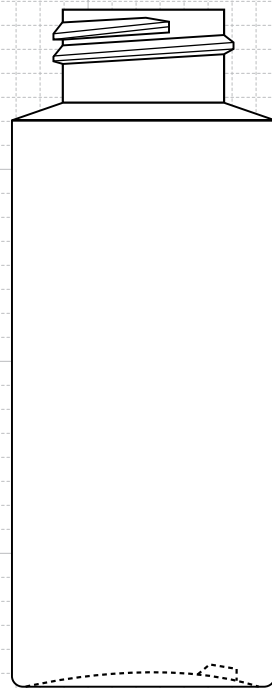
Cases Per Pallet: **25**

Box Dimensions:  
**23 5/8 x 15 9/16 x 17**

Stock Material:

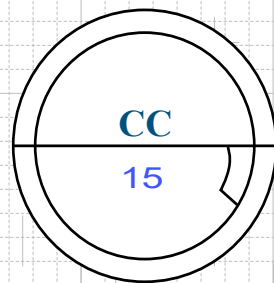


**FRONT VIEW**



**A**

**B**

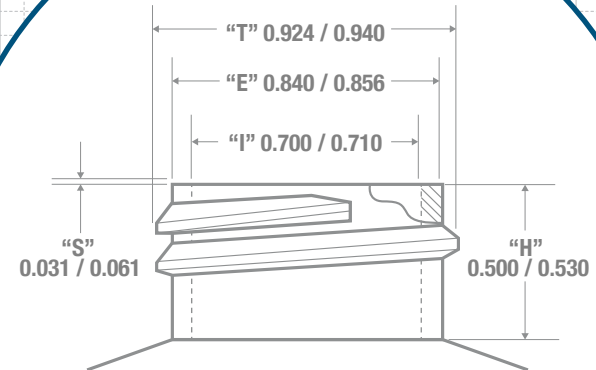


**BOTTOM VIEW**

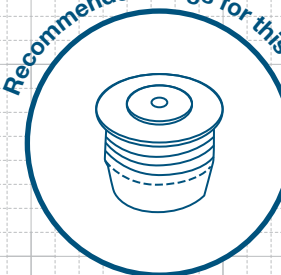
**CC**

**15**

**NECK & THREAD DETAIL**



*Recommended Plugs for this bottle*

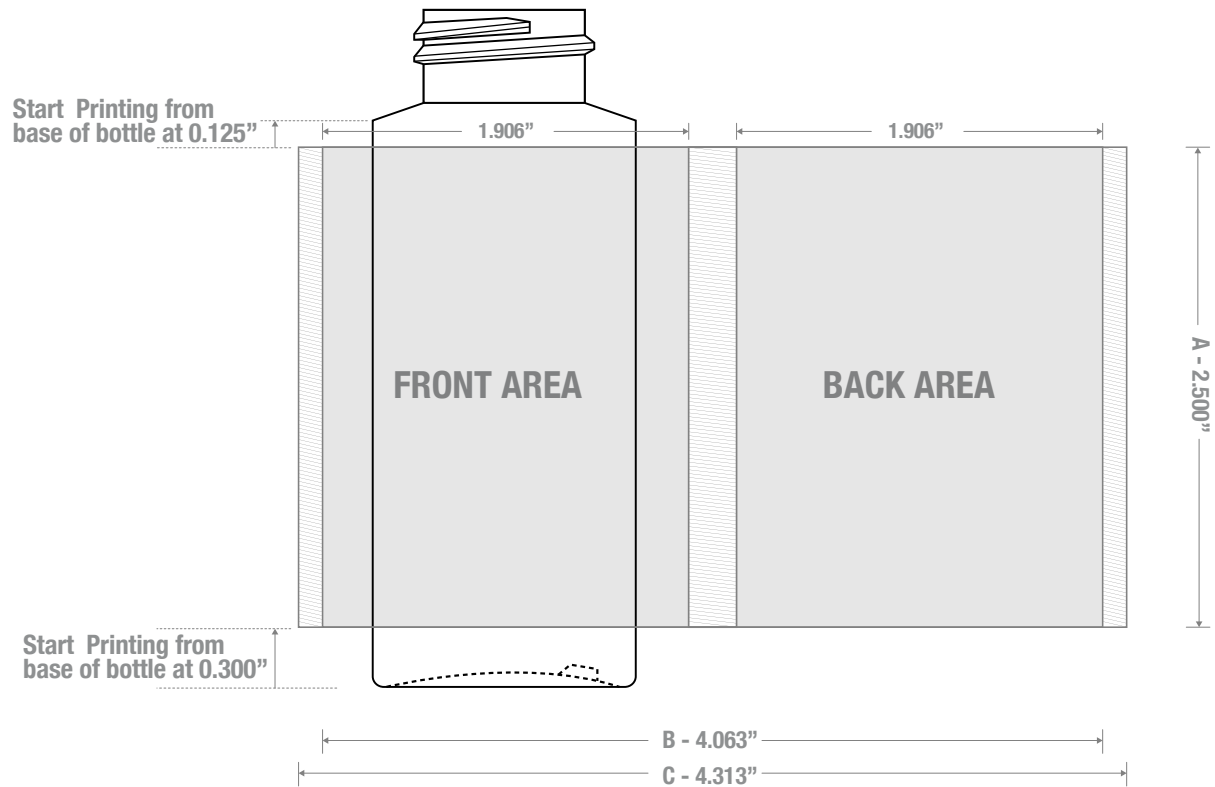


**FRICION FIT**



**CLASSIC CONTAINERS INC**  
 1700 S. Hellman Ave.  
 Ontario, CA 91761  
 Phone: 909-930-3610  
 e-mail: info@classiccontainers.com  
 www.classiccontainers.com

# PRINTING SPECIFICATIONS: 2 oz CYLINDER ROUND 24/400 M2



1700 S Hellman Ave, Ontario, California 91761  
Phone: (909) 930-3610 | Fax: (909) 930-3640  
e-mail: [info@classiccontainers.com](mailto:info@classiccontainers.com)  
[www.classiccontainers.com](http://www.classiccontainers.com)

**A - Total Height.**  
**B - Max. Decorating Area.**  
**C - Total bottle circumference.**  
☒ - Unprintable area.

# LABELING SPECIFICATIONS: 2 oz CYLINDER ROUND 24/400 M2



1700 S Hellman Ave, Ontario, California 91761  
Phone: (909) 930-3610 | Fax: (909) 930-3640  
e-mail: [info@classiccontainers.com](mailto:info@classiccontainers.com)  
[www.classiccontainers.com](http://www.classiccontainers.com)

**A - Total Height.**  
**B - Max. Decorating Area.**