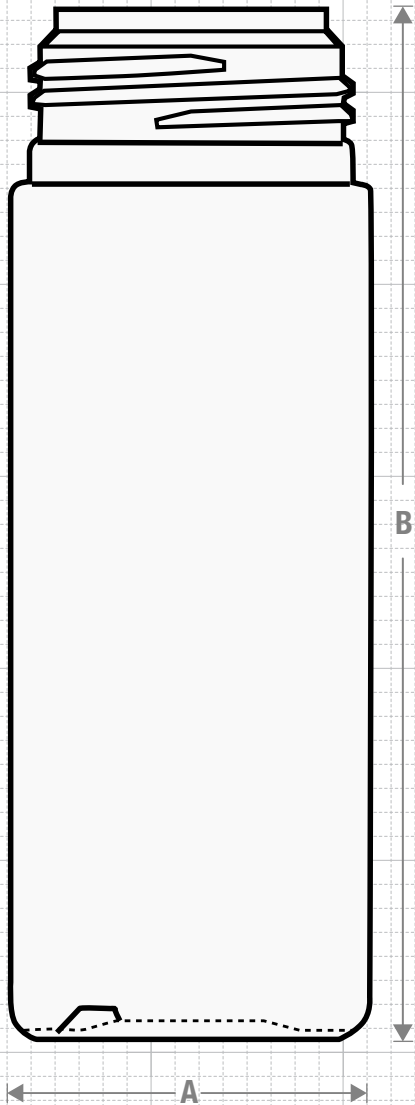




FRONT VIEW



Drawing:
150 ml Classic Foamer
43 mm

Stock Code:
015000200430000

Manufacturing Process:
Extrusion Blow Molding

Overflow Capacity:
207-218 ml (7.0-7.4 oz)

Gram Weight:
20± 2

Neck Finish:
43 mm

Base Width (A):
1.880 ± 0.050

Overall Height (B):
5.365 ± 0.050

Max Print Area (Height):
4.000"

Max Print Area (Width):
5.625"

Case Pack: 528

Case Weight (lb): 26 ±2.3

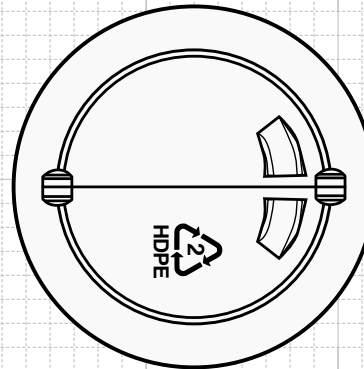
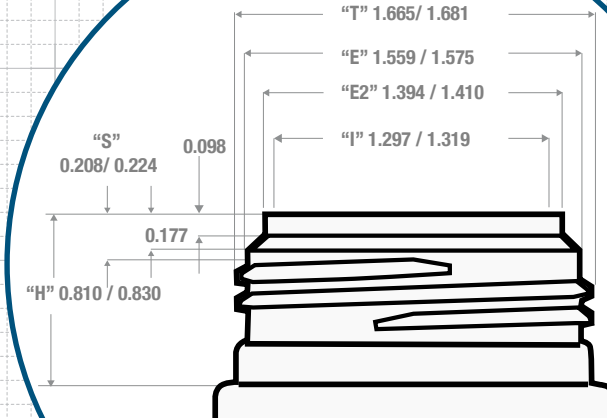
Cases Per Pallet: 16

Box Dimensions:
24 7/16X18 1/2X23

Stock Material:



NECK & THREAD DETAIL



BOTTOM VIEW

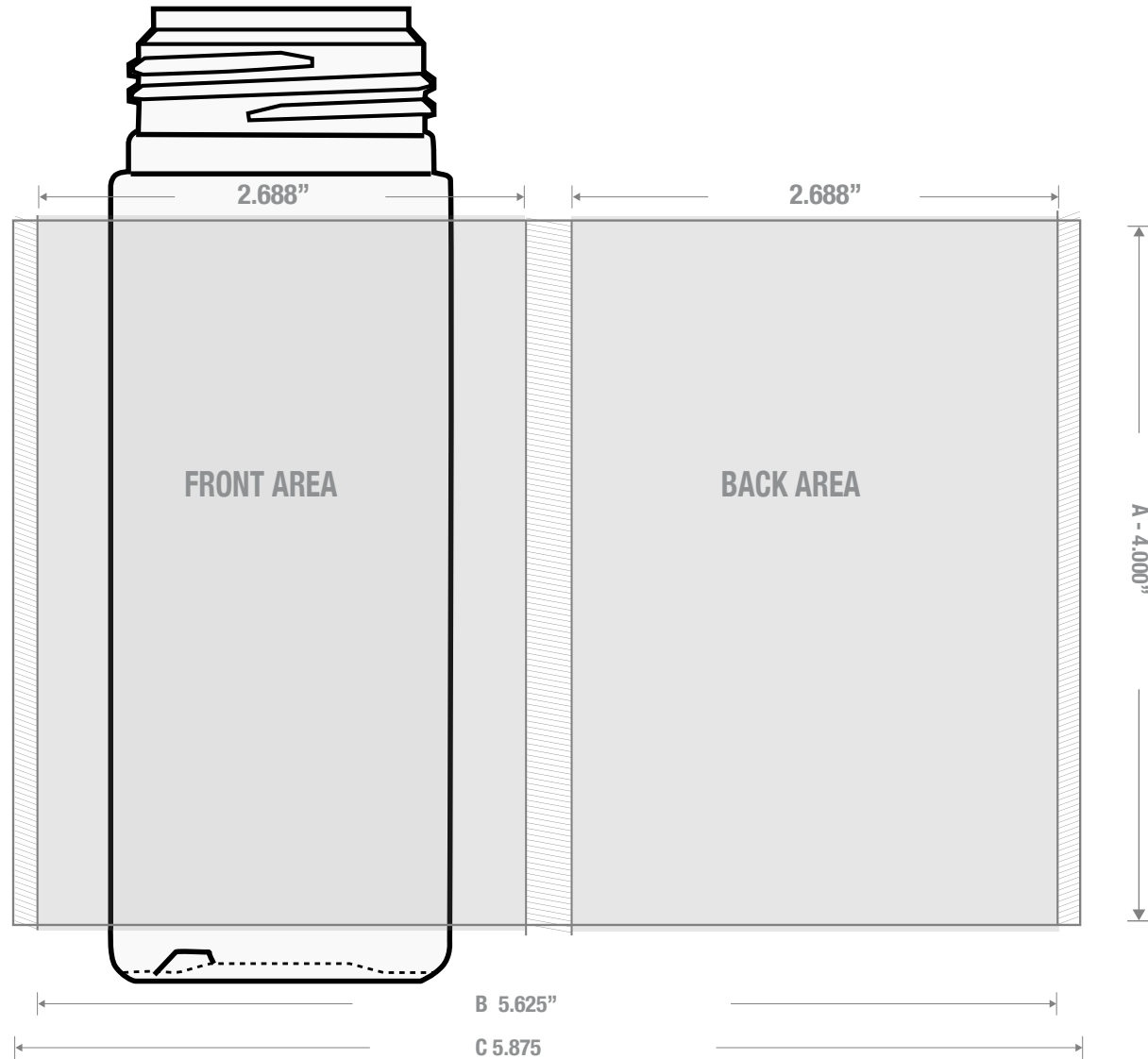
Accept:

**Airspray F2
Rieke**



CLASSIC CONTAINERS INC
1700 S. Hellman Ave.
Ontario, CA 91761
Phone: 909-930-3610
e-mail: info@classiccontainers.com
www.classiccontainers.com

PRINTING SPECIFICATIONS: 150 mm Classic Foamer 43 mm



1700 S Hellman Ave, Ontario, California 91761
Phone: (909) 930-3610 | Fax: (909) 930-3640
e-mail: info@classiccontainers.com
www.classiccontainers.com

A - Total Height.
B - Max. Decorating Area.
C - Total bottle circumference.
☐ - Unprintable area.