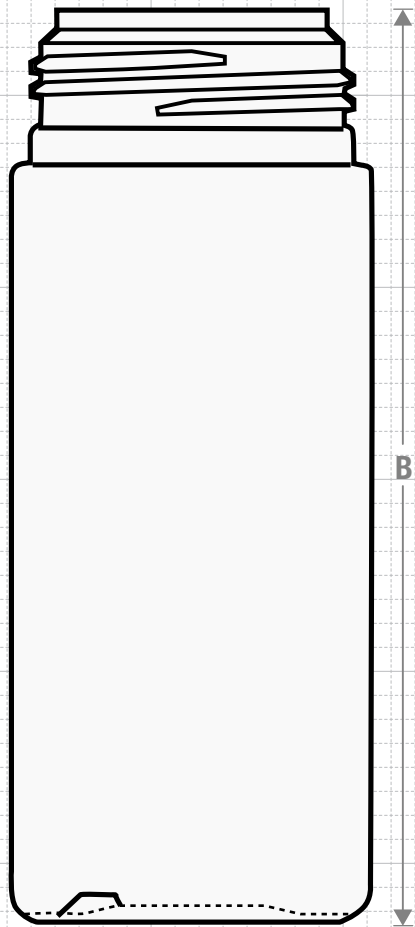




FRONT VIEW



Drawing:
125 ml Classic Foamer
43 mm

Stock Code:
012500200430000

Manufacturing Process:
Extrusion Blow Molding

Overflow Capacity:
183-195 ml (6.2-6.6 oz)

Gram Weight:
18± 1

Neck Finish:
43 mm

Base Width (A):
1.880 ± 0.050

Overall Height (B):
4.750 ± 0.050

Max Print Area (Height):
3.375"

Max Print Area (Width):
5.625"

Case Pack: **360**

Case Weight (lb): **16.4 ±0.8**

Cases Per Pallet: **25**

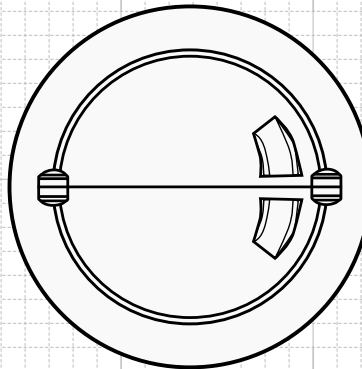
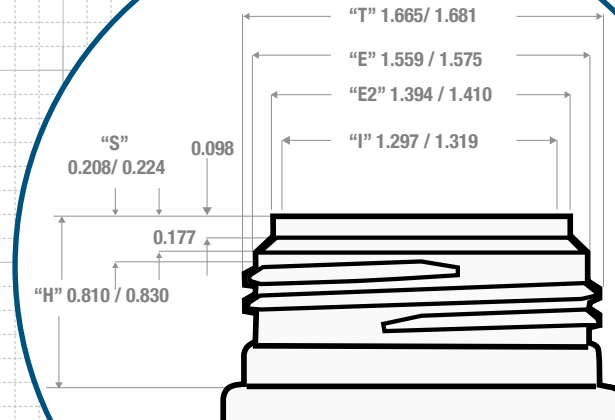
Box Dimensions:
23 5/8X15 9/16X17

Stock Material:



CLASSIC CONTAINERS INC
1700 S. Hellman Ave.
Ontario, CA 91761
Phone: 909-930-3610
e-mail: info@classiccontainers.com
www.classiccontainers.com

NECK & THREAD DETAIL



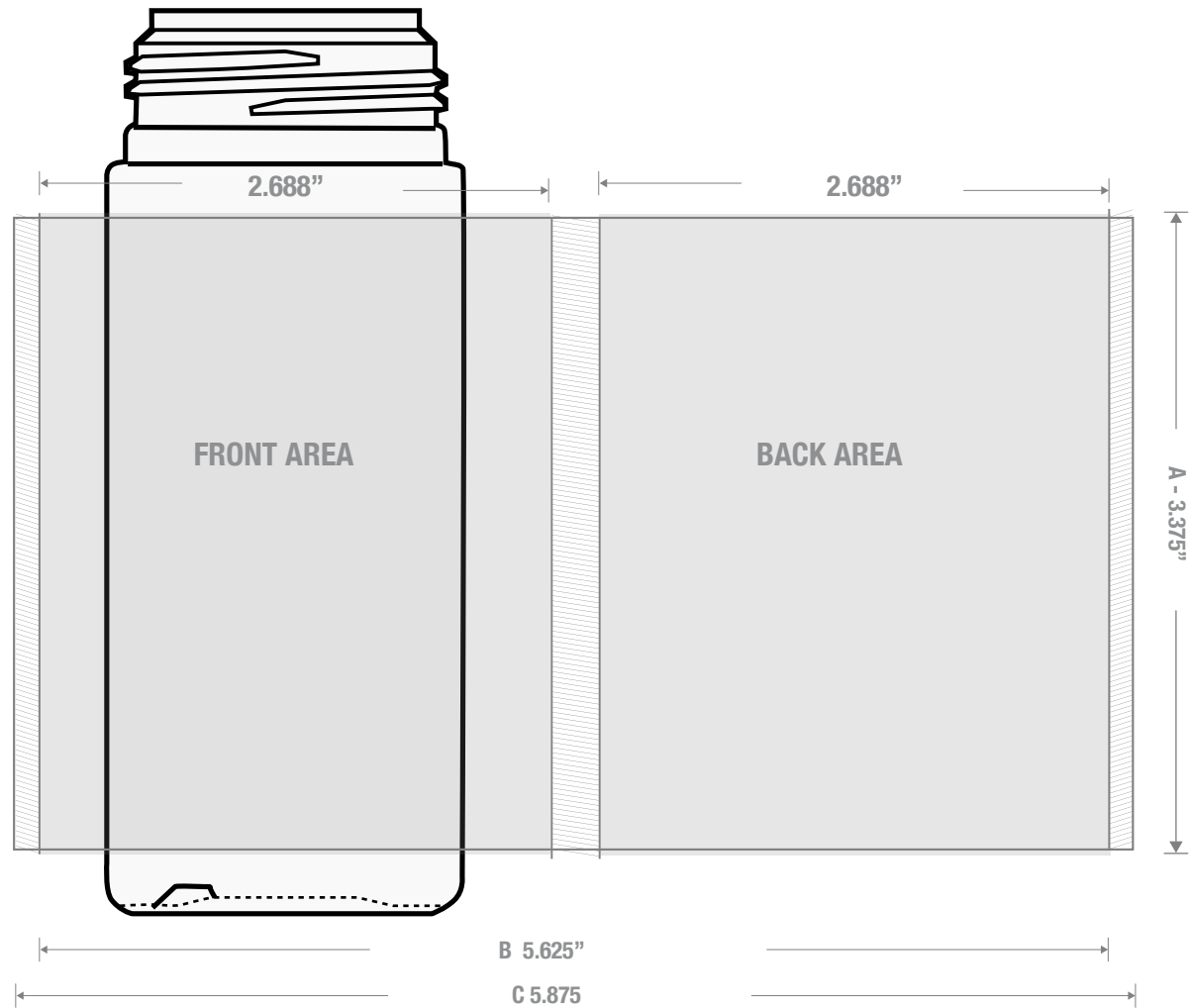
BOTTOM VIEW

Accept:

**Airspray F2
Rieke**



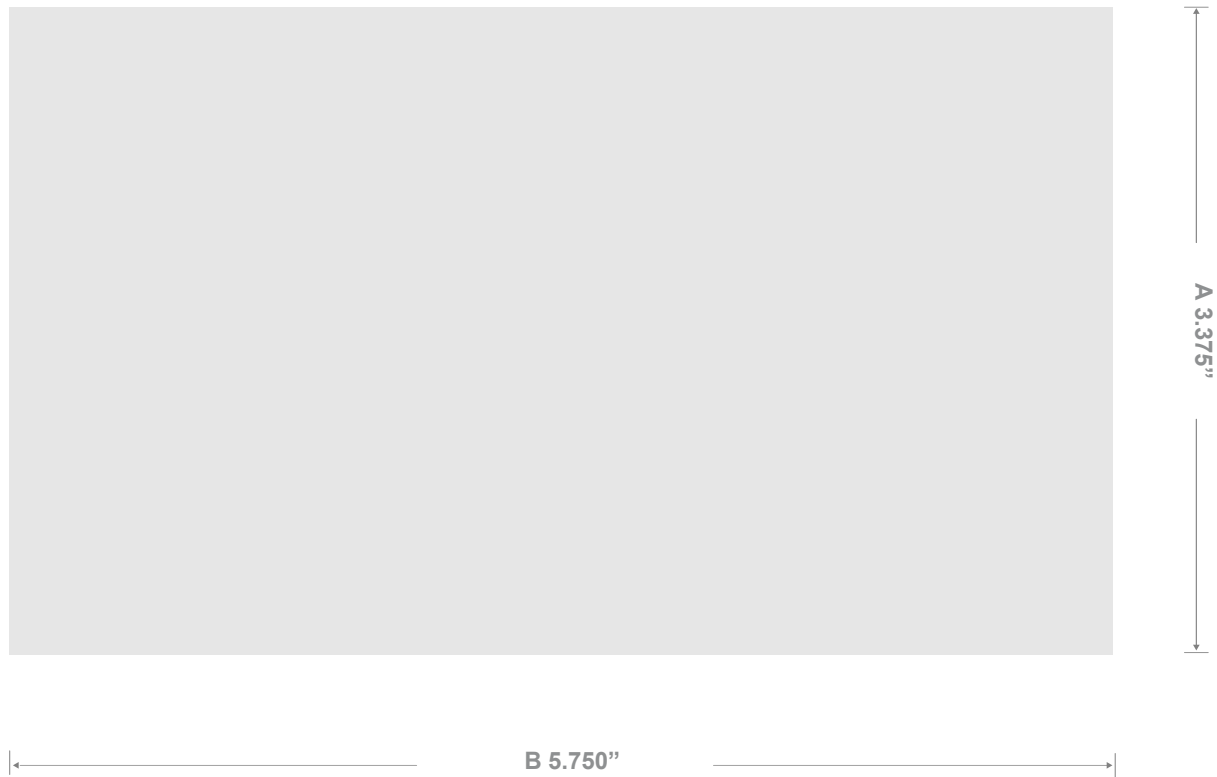
PRINTING SPECIFICATIONS: 125 mm Classic Foamer 43 mm



1700 S Hellman Ave, Ontario, California 91761
Phone: (909) 930-3610 | Fax: (909) 930-3640
e-mail: info@classiccontainers.com
www.classiccontainers.com

A - Total Height.
B - Max. Decorating Area.
C - Total bottle circumference.
▨ - Unprintable area.

LABELING SPECIFICATIONS: 125 mm Classic Foamer 43 mm



1700 S Hellman Ave, Ontario, California 91761
Phone: (909) 930-3610 | Fax: (909) 930-3640
e-mail: info@classiccontainers.com
www.classiccontainers.com

A - Total Height.
B - Total bottle circumference.