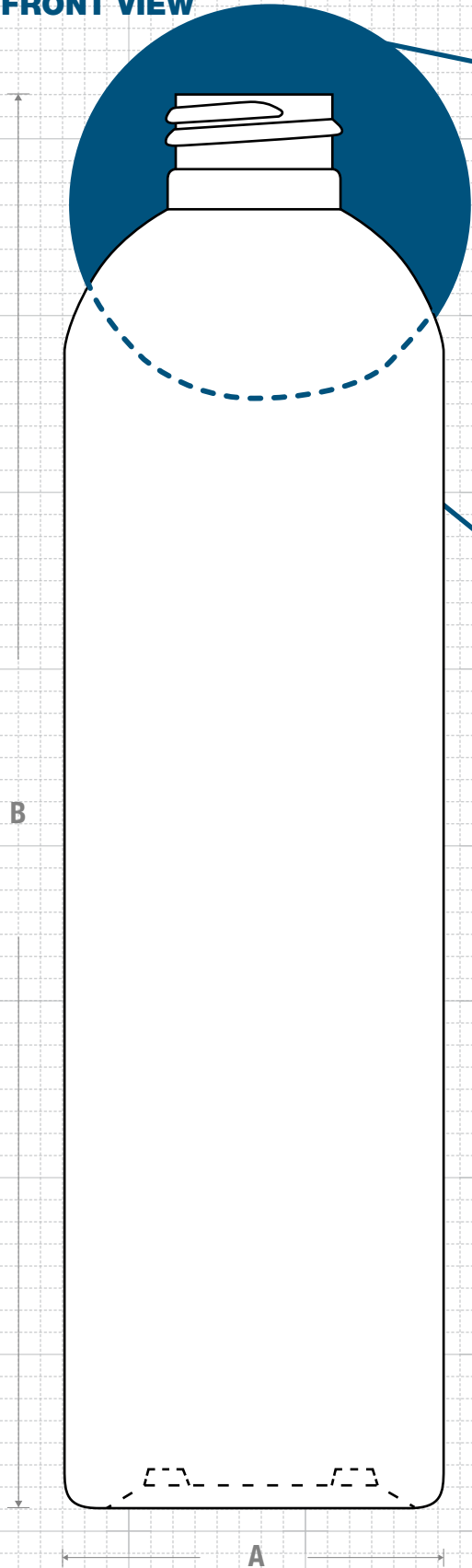
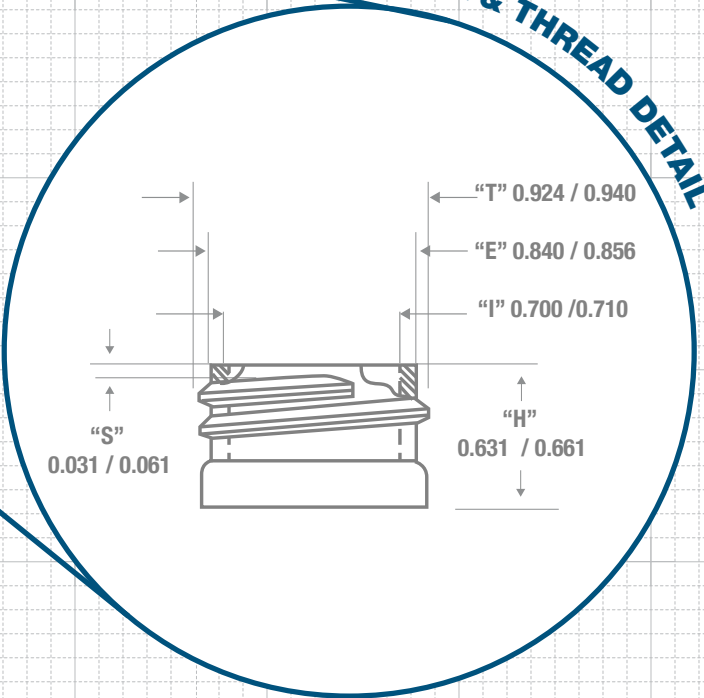


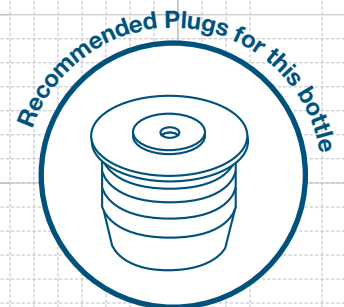
**FRONT VIEW**



**NECK & THREAD DETAIL**

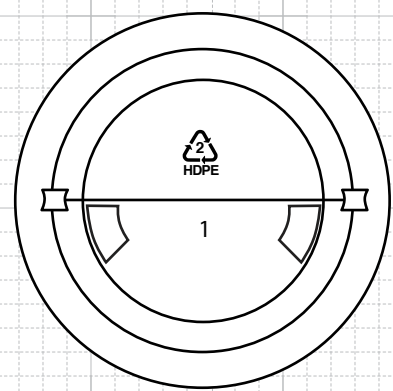


- 2 HDPE
- 4 LDPE
- 5 PP
- 7 OTHER



**FRICITION FIT**

**BOTTOM VIEW**

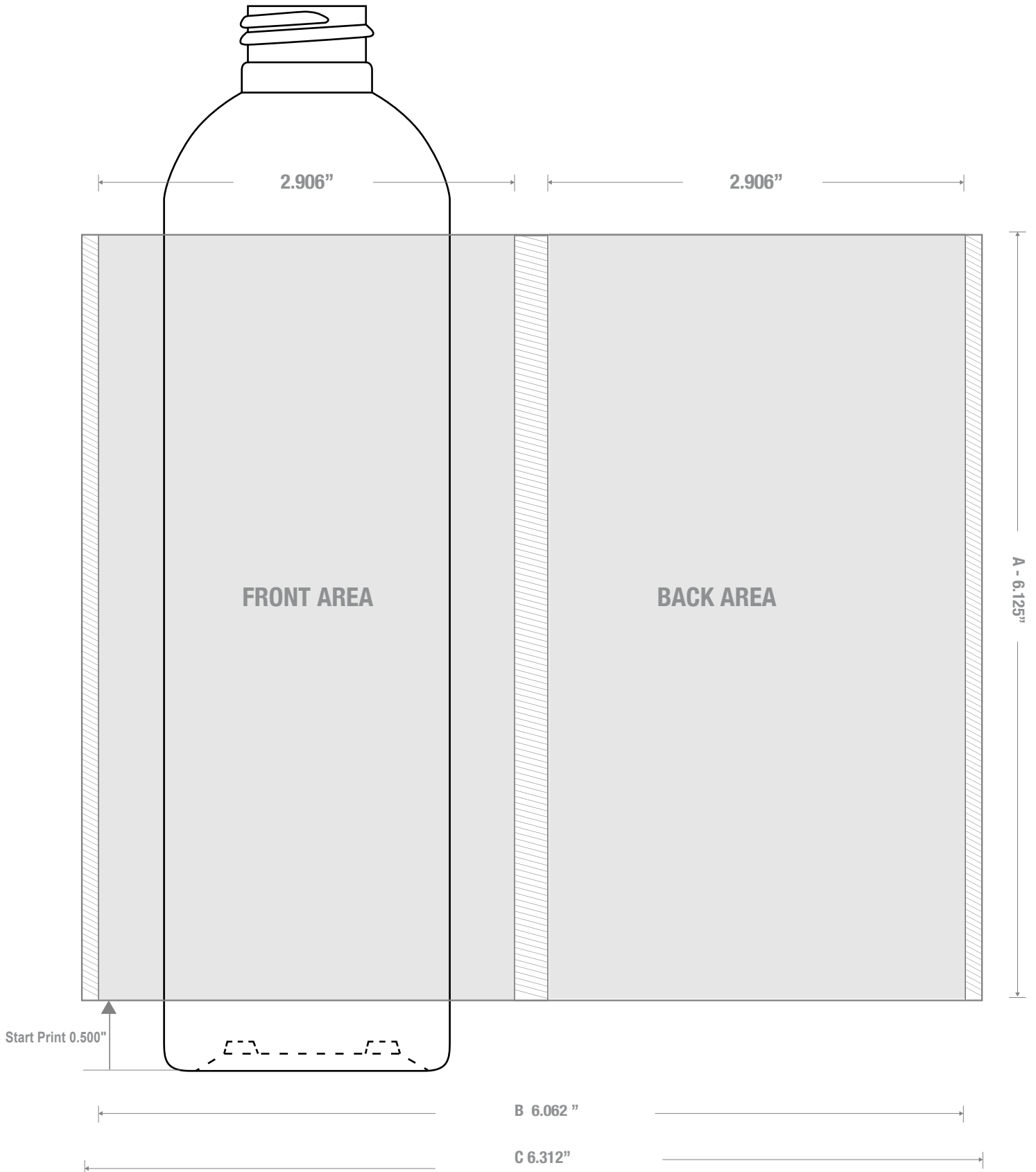


**Other Material Options**  
 Stock Material: HD/ST  
 Case Pack: 312  
 Case Weight (lb): 20.0 ± 1.4



**CLASSIC CONTAINERS INC**  
 1700 S. Hellman Ave.  
 Ontario, CA 91761  
 Phone: 909-930-3610  
 e-mail: info@classiccontainers.com  
 www.classiccontainers.com

Drawing: <b>10 oz Imperial Round 24/410</b>	Gram Weight: <b>25 ± 2</b>	Max Print Area (Height): <b>6.125"</b>	Cases Per Pallet: <b>16</b>
Stock Code: <b>0010000502400</b>	Neck Finish: <b>24/410</b>	Max Print Area (Width): <b>6.062"</b>	Box Dimensions: <b>24 7/16 x 18 1/2 x 23</b>
Manufacturing Process: <b>Extrusion Blow Molding</b>	Base Width (A): <b>1.950 ± 0.005</b>	Case Pack: <b>336</b>	Stock Material:  HDPE
Overflow Capacity: <b>322- 340 ml (10.9 - 11.5 oz)</b>	Overall Height (B): <b>8.015 ± 0.050</b>	Case Weight (lb): <b>21.4 ± 1.5</b>	Rev #4 8/2018 Drawing not exactly to size.



Labeling Area



1700 S Hellman Ave, Ontario, California 91761  
Phone: (909) 930-3610 | Fax: (909) 930-3640  
e-mail: [info@classiccontainers.com](mailto:info@classiccontainers.com)  
[www.classiccontainers.com](http://www.classiccontainers.com)

**A - Total Height.**  
**B - Max. Decorating Area.**